

# Waldo Mini-Wired

M2MD-ETMW-0001



Multiple location sensing technologies

LED status indicator

Backup battery

Device status

Designed and manufactured in the USA

Easy connect wire harness

## Improves Insights

Asset tracking provides better asset utilization

Accurate and real-time sensor data drives better management and decision-making

## Increases Profits

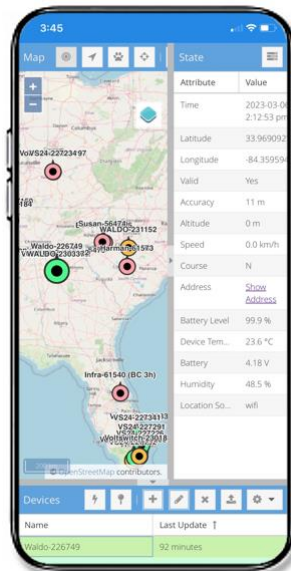
Accurate asset management drives efficiencies & cost savings

Increases asset lifespan & labor productivity

Identifies ghost assets and prevents loss

Drives new revenue generating opportunities through analytics

## Features



### Intelligent Device

GPS, cell tower triangulation & Wi-Fi location

High performance edge sensor alerting

Periodic or movement-based location reports.

'On-demand location'

### World-class SaaS platform

High availability SaaS platforms in multiple AWS availability zones

Simple & secure APIs for customer integrations

### Cutting edge

Wireless CAT M1 modem/processor

High performance GPS & cellular antennas

Water and dust resistant

Designed, developed and manufactured in the USA

### Energy Efficiency

Ultra-low power draw from host vehicle battery.

Patented next generation wireless IoT connection, power management and security technology



## Location Connectivity

- GPS fast location
- Wi-Fi location assistance
- Wi-Fi geofencing
- Cell tower triangulation

## Sensors

- Accelerometer – high performance 3-axis for movement detection

## Hardware

- Nordic Semiconductor NRF9160 wireless CAT M1 modem/processor
- High performance GPS & cellular antennas
- Wiring harness for easy connection

## Energy Efficiency

- Ultra-low power draw from host vehicle battery
- Backup battery to provide location in the event device is disconnected from the vehicle

## Software Integration

- Easy integration with virtually any front-end using AWS SQS
- Over-the-air (OTA) Software upgradeable

## Additional Information

- Lowest power wireless chipset
- Size: 1.5" Width x 4.25" Length x 0.5" Height

## Made in the USA

- Designed, developed and manufactured in the USA
- Part# M2MD-ETMW-0001